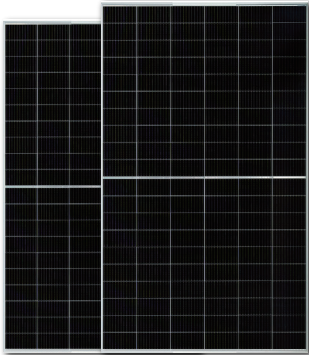


LESSO



**HYBRID
SOLAR ENERGY SOLUTION**

①



②



③



④



⑤



⑥



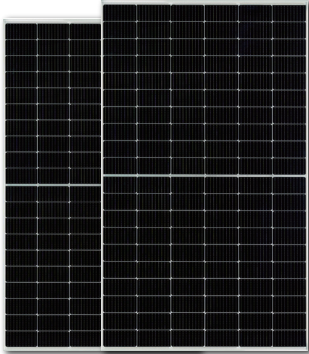
PRODUCT CONFIGURATION

- ① Solar Panel — 410W *8pcs
- ② Bracket — Roof pitch/ground
- ③ Hybrid Inverter — 3kW(single phase)
- ④ LifePO₄ Battery — 5.12kWh
- ⑤ PV Cable Kit — DC 4m²/6m²
- ⑥ Tool Bag — 6 tools

CONDITIONS REQUIREMENTS

- Total EPS Load <3kW (lights, fridge, pc, etc)
- Battery Backup Energy =5.12kWh
- PV Installation Footprint >20m²
- Daily Electricity Generation =16.4kWh (5 hrs sun)

①



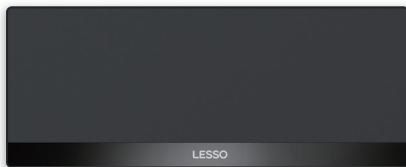
②



③



④



⑤



⑥



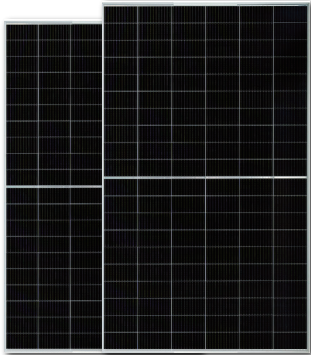
PRODUCT CONFIGURATION

- ① Solar Panel — 410W *8pcs
- ② Bracket — Roof pitch/ground
- ③ Hybrid Inverter — 3kW(single phase)
- ④ LifePO₄ Battery — 6.14kWh
- ⑤ PV Cable Kit — DC 4m²/6m²
- ⑥ Tool Bag — 6 tools

CONDITIONS REQUIREMENTS

- Total EPS Load <3kW (lights, fridge, pc, etc)
- Battery Backup Energy =6.14kWh
- PV Installation Footprint >20m²
- Daily Electricity Generation =16.4kWh (5 hrs sun)

①



②



③



④



⑤



⑥



PRODUCT CONFIGURATION

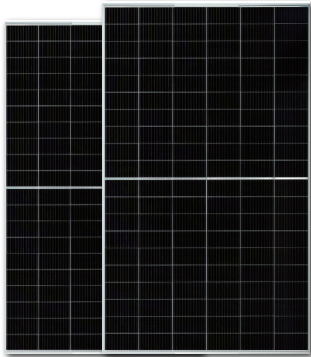
- ① Solar Panel — 410W * 16pcs
- ② Bracket — Roof pitch/ground
- ③ Hybrid Inverter — 8kW(3 phase)
- ④ LifePO₄ Battery — 10.24kWh
- ⑤ PV Cable Kit — DC 4m²/6m²
- ⑥ Tool Bag — 6 tools

Packing Details: 2.5CBM, 560kgs aprox

CONDITIONS REQUIREMENTS

- Total EPS Load <8kW (lights, fridge, pc, etc)
- Battery Backup Energy =10.24kWh
- PV Installation Footprint >40m²
- Daily Electricity Generation =32.8kWh (5 hrs sun)

①



②



③



④



⑤



⑥



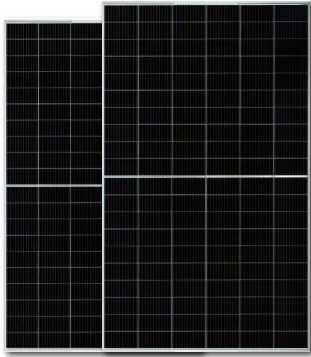
PRODUCT CONFIGURATION

- ① Solar Panel — 410W *20pcs
- ② Bracket — Roof pitch/ground
- ③ Hybrid Inverter — 10kW(3 phase)
- ④ LifePO₄ Battery — 15.36kWh
- ⑤ PV Cable Kit — DC 4m²/6m²
- ⑥ Tool Bag — 6 tools

CONDITIONS REQUIREMENTS

- Total EPS Load <10kW (lights, fridge, pc, etc)
- Battery Backup Energy =15.36kWh
- PV Installation Footprint >45m²
- Daily Electricity Generation =41kWh (5 hrs sun)

①



②



③



④



⑤



⑥



PRODUCT CONFIGURATION

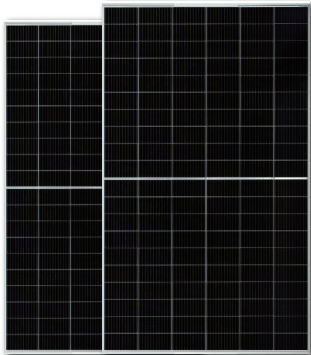
- ① Solar Panel — 410W *24pcs
- ② Bracket — Roof pitch/ground
- ③ Hybrid Inverter — 12kW(3 phase)
- ④ LifePO₄ Battery — 20.48kWh
- ⑤ PV Cable Kit — DC 4m²/6m²
- ⑥ Tool Bag — 6 tools

Packing Details: 3.5CBM, 820kgs aprox

CONDITIONS REQUIREMENTS

- Total EPS Load <12kW (lights, fridge, pc, etc)
- Battery Backup Energy =20.48kWh
- PV Installation Footprint >60m²
- Daily Electricity Generation =49.2kWh (5 hrs sun)

①



②



③



④



⑤



⑥



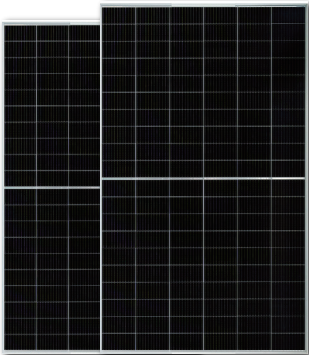
PRODUCT CONFIGURATION

- ① Solar Panel — 410W * 24pcs
- ② Bracket — Roof pitch/ground
- ③ Hybrid Inverter — 15kW(3 phase)
- ④ LifePO₄ Battery — 20.48kWh
- ⑤ PV Cable Kit — DC 4m²/6m²
- ⑥ Tool Bag — 6 tools

CONDITIONS REQUIREMENTS

- Total EPS Load <15kW (lights, fridge, pc, etc)
- Battery Backup Energy =20.48kWh
- PV Installation Footprint >60m²
- Daily Electricity Generation =49.2kWh (5 hrs sun)

①



②



③



④



⑤



⑥



PRODUCT CONFIGURATION

- ① Solar Panel — 550W *32pcs
- ② Bracket — Roof pitch/ground
- ③ Hybrid Inverter — 10kW*2pcs (3 phase)
- ④ LifePO₄ Battery — 53.7kWh
- ⑤ PV Cable Kit — DC 4m²/6m²
- ⑥ Tool Bag — 6 tools

Packing Details: 4.5CBM, 1620kgs aprox

CONDITIONS REQUIREMENTS

- Total EPS Load <10kW (lights, fridge, pc, etc)
- Battery Backup Energy =53.7kWh
- PV Installation Footprint >75m²
- Daily Electricity Generation =88kWh (5 hrs sun)